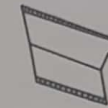
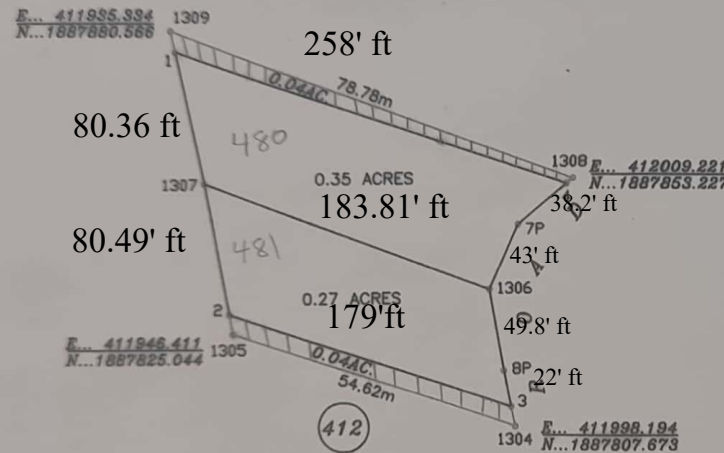


RD/142/03

# SHEET NO.55 1186 A. ALTERATION OF PARCELS 374&375 LOCATION: JOLLY HARBOUR



SCALE: 1:5,000



1-1307..	59°07'17"	24.50m
1307-1306..	122°55'20"	56.04m
1306- 7P..	93°43'19"	13.14m
7P-	4..205°34'16"	11.68m
4-	1.. 58°39'48"	75.96m
1307-	2.. 58°41'50"	24.54m
2-	3..119°02'17"	54.58m
3-	8P.. 60°10'09"	6.73m
8P-1306..	181°46'48"	15.19m
1306-1307..	120°18'56"	56.04m

ORIGINAL BDRY

SCALE: 1:1250

REUBEN DEUBRY, L.S.  
14 APRIL, 2003

Authenticated By   
Chief Surveyor  
Surveys Division 4-7-03